

# STANDARD AFM® / SAND FILTERS

## FB SERIES Ø 1010-3000



Ref	ID	Ø D	H	O	A	B	Connections	Filt. Surface	AFM® G3 / G2 / G1 (21 Kg) Sand(2-3/0.7-1.2/0.4-0.8)(25 Kg)
232010	FB-40	1010	1200	165	500	300 *	DN80	0,78 m <sup>2</sup>	6 / 4 / 18
232011	FB-50	1160	1300	165	550	300 *	DN80	1,01 m <sup>2</sup>	8 / 5 / 29
232012	FB-60	1260	1350	165	550	400 *	DN100	1,21 m <sup>2</sup>	10 / 6 / 38
232014	FB-80	1440	1470	165	625	400 *	DN100	1,55 m <sup>2</sup>	14 / 7 / 56
232016	FB-100	1640	1670	165	720	450 *	DN125	2,04 m <sup>2</sup>	21 / 9 / 82
232018	FB-125	1840	1760	165	740	450 *	DN125	2,52 m <sup>2</sup>	29 / 11 / 109
232020	FB-150	2040	1870	165	725	550	DN150	3,17 m <sup>2</sup>	40 / 14 / 146
232022	FB-175	2210	1990	165	760	605	DN150	3,77 m <sup>2</sup>	55 / 17 / 194
232023	FB-200	2340	2000	165	765	600	DN200	4,06 m <sup>2</sup>	59 / 18 / 209
232025	FB-250	2550	2070	165	760	700	DN250	4,91 m <sup>2</sup>	75 / 22 / 253
232028	FB-300	2800	2200	190	850	650	DN250	5,97 m <sup>2</sup>	116 / 27 / 308
232030	FB-350	3000	2090	190	Check		DN250	6,90 m <sup>2</sup>	124 / 31 / 317

Dimensions in mm.

### FB SERIES

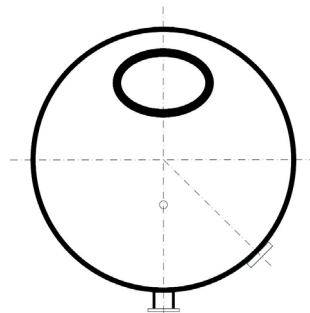
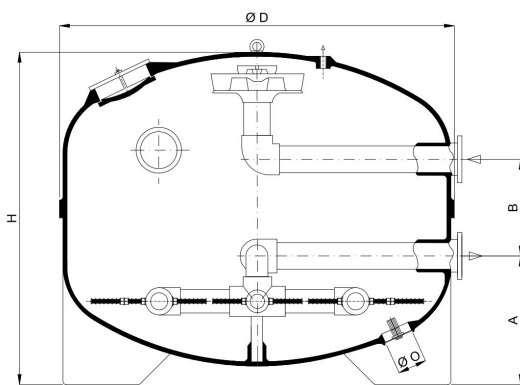
Design pressure 2,5 Kg/cm<sup>2</sup> | Test pressure 3,75 Kg/cm<sup>2</sup>.  
 Sight glass included.  
 Internal steel reinforced filter.  
 GRP Flanged connections.  
 GRP Calplas diffuser.  
 Elliptical top manhole.  
 Lifting lug.  
 GRP reinforced internal pipping.  
 Bottom emptying hole.  
 Optimal performace with AFM® / Sand.



**\*BESGO READY FILTERS!**

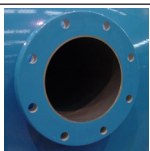
### ADDITIONAL OPTIONS

High temperature.  
 Available for higher pressure up to 6 kg/cm<sup>2</sup>.  
 Other flange sizes available  
 Ad-hoc holes and sight glasses orientation.



**ALWAYS WITH SIGHT GLASS!  
 STANDARD POSITION 7**

Flange integrated in body



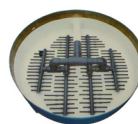
Top diffuser



Top manhole



Arm collectors



Sight glass



Emptying hole

